

Providence Grove, Stevenage, Hertfordshire, SG1 3SP

£200,000

H&M
sales and lettings



GUIDE PRICE £200,000 - £220,000
CHAIN FREE!! One bedroom cluster home located within walking distance of Stevenage New & Old Town, with two allocated parking spaces and ample communal parking this freehold property is ideal for first time buyers and investors alike with a yield potential of 6%. For more information and to arrange your viewing call Homes and Mortgages on 01438 728 444.

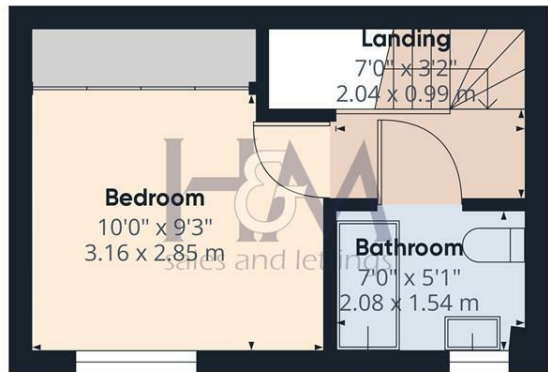


86 High Street
Stevenage
Hertfordshire
SG1 3DW
01438 728444
stevenage@homesandmortgages.co.uk



Floor 0

Approximate total area⁽¹⁾
384.92 ft²
35.76 m²



Floor 1

(1) Excluding balconies and terraces

While every attempt has been made to ensure accuracy, all measurements are approximate, not to scale. This floor plan is for illustrative purposes only.

GIRAFFE360

